





Ministry of Transportation of the Republic of Indonesia  
Directorate General of Sea Transportation

# Implementation of an Integrated Port Services System and Data Exchange in Indonesia




## NATIONAL LOGISTICS ECOSYSTEM MANAGEMENT

**Presidential Instruction (Inpres) Number 5 of 2020 on the National Logistics Ecosystem Management (NLE)** improves the investment climate and increase the competitive of national economy.

In the Instruction, the Minister of Finance is responsible for implementing the management of the national logistics ecosystem, via:

- 1. Simplification of government service business processes in information technology based** to eliminate repetition and duplication;
- 2. Collaboration of logistics system both international and domestic**, covering logistics stakeholders in the public and private sectors;
- 3. Ease of payment transactions for state revenues and facilitation of payments** between business operators in the logistics process;
- 4. Structuring the system and layout of the port and distribution lines.**


**Pilot projects:**

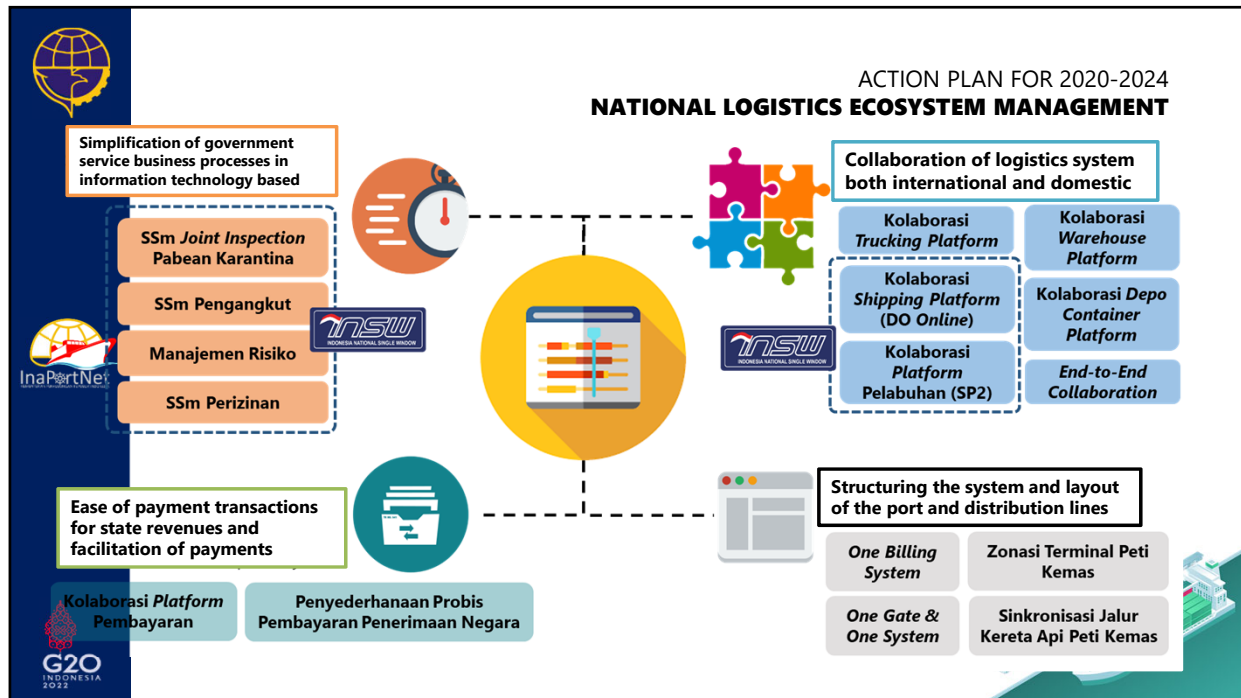
1. Tj Priok- Jakarta
2. Tj emas - Semarang
3. Tj Perak- Surabaya
4. Belawan - Medan
5. Batam
6. Kendari
7. Balikpapan
8. Merak
9. Panjang
10. Samarinda
11. Palembang
12. Lampung
13. Dumai
14. Pontianak

**STANDARD**

- Reduced logistics costs
- Industrial sector growth
- Fair industry competition (transparency, services standards)

- Focus on port logistics
- Focus on improving port area governance regulations
- Encouraging the acceleration of the implementation of presidential instruction No. 5 of the 2020 about regulation national logistics ecosystem
- Focus on improving the service system in port area



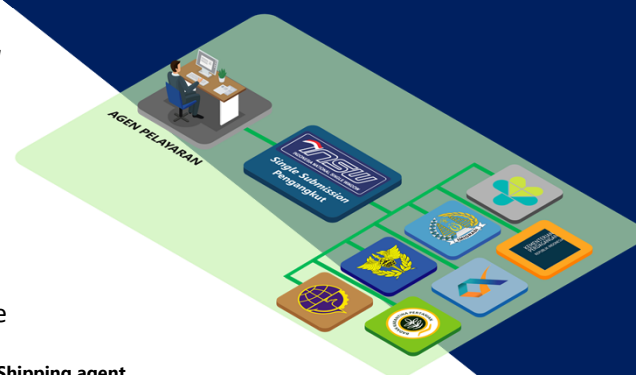


## Carrier Single Sub-Mission (SSM Pengangkut)

Integrated Carrier Single Submission, so-called *SSM pengangkut*, is one of our products to collaborate regulators that in charge in ports. This platform collaborates Customs, Directorate General of Sea Transportation (DGST), Immigration, Health Quarantine, and other government agencies.

The purpose of this platform is to give best experience of service in Indonesia. With single submission concept, shipping agent only access one single window to inform their vessel arrival and departure. They can monitor their documents in monitoring dashboard.

## Collaboration among Stakeholders

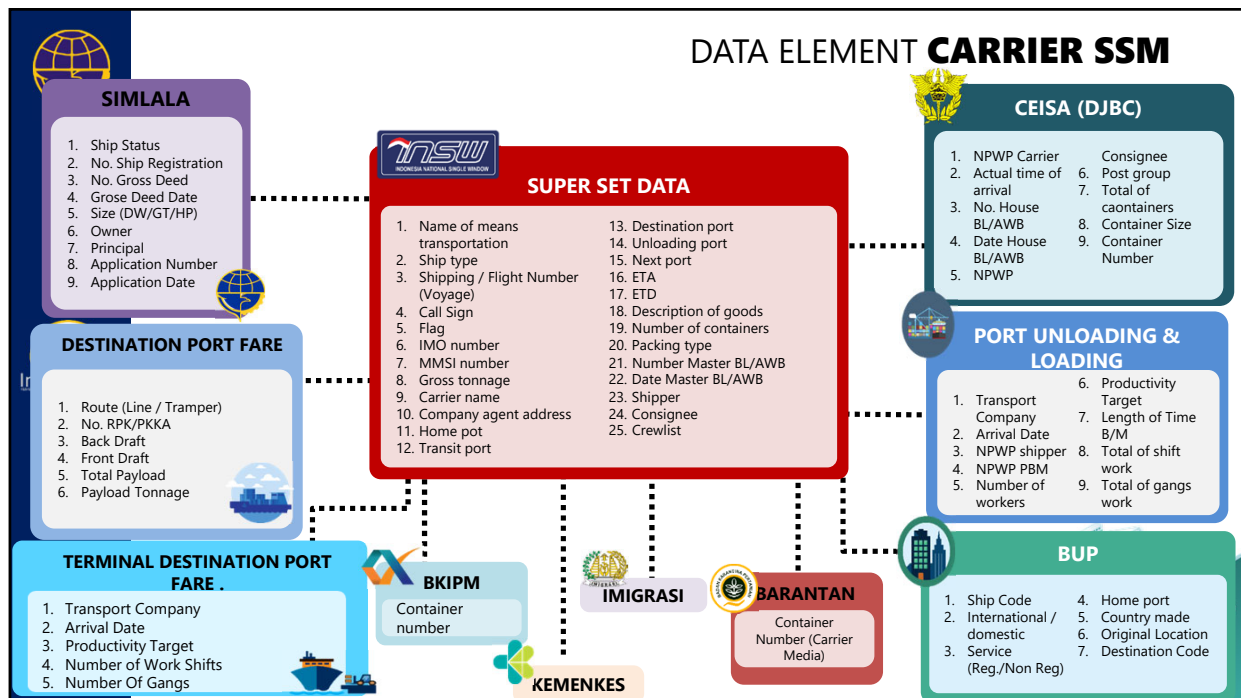
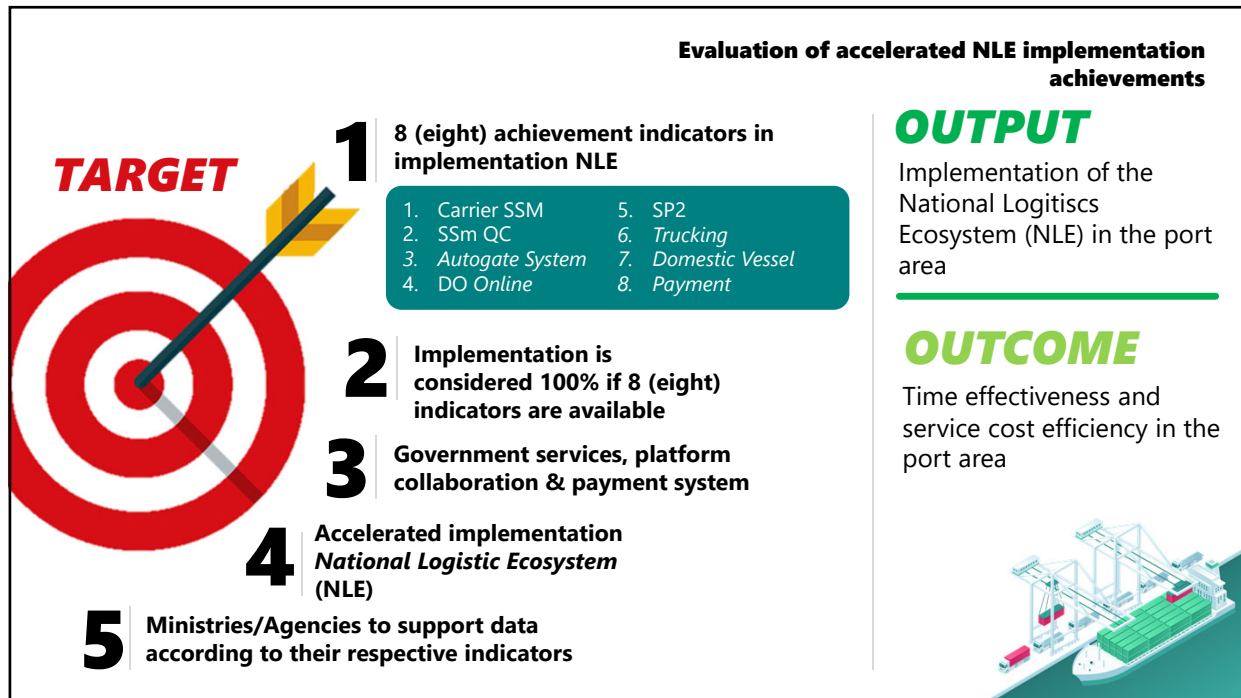


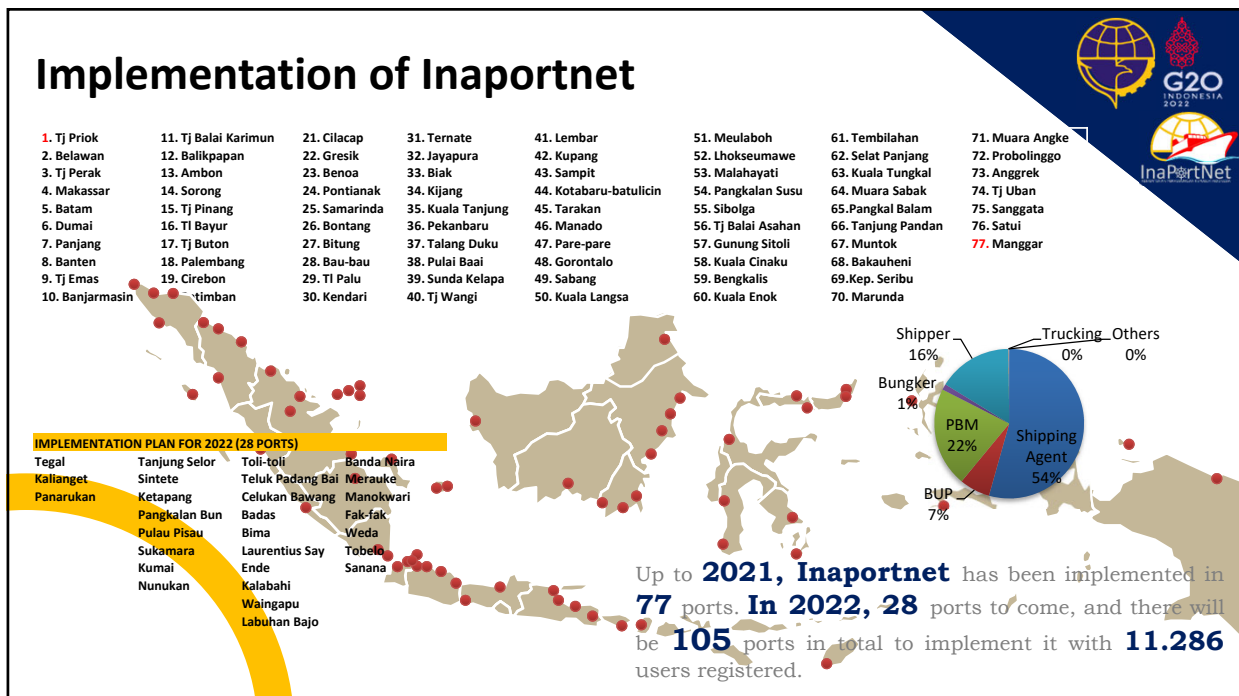
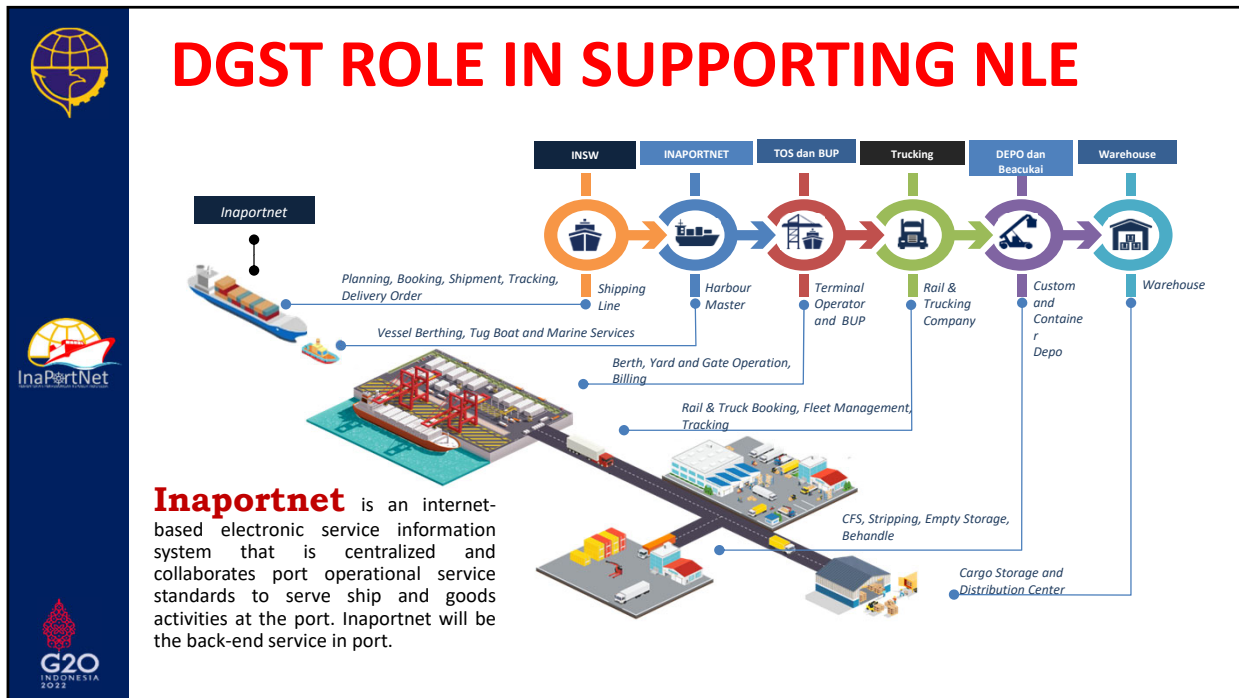
### Shipping agent

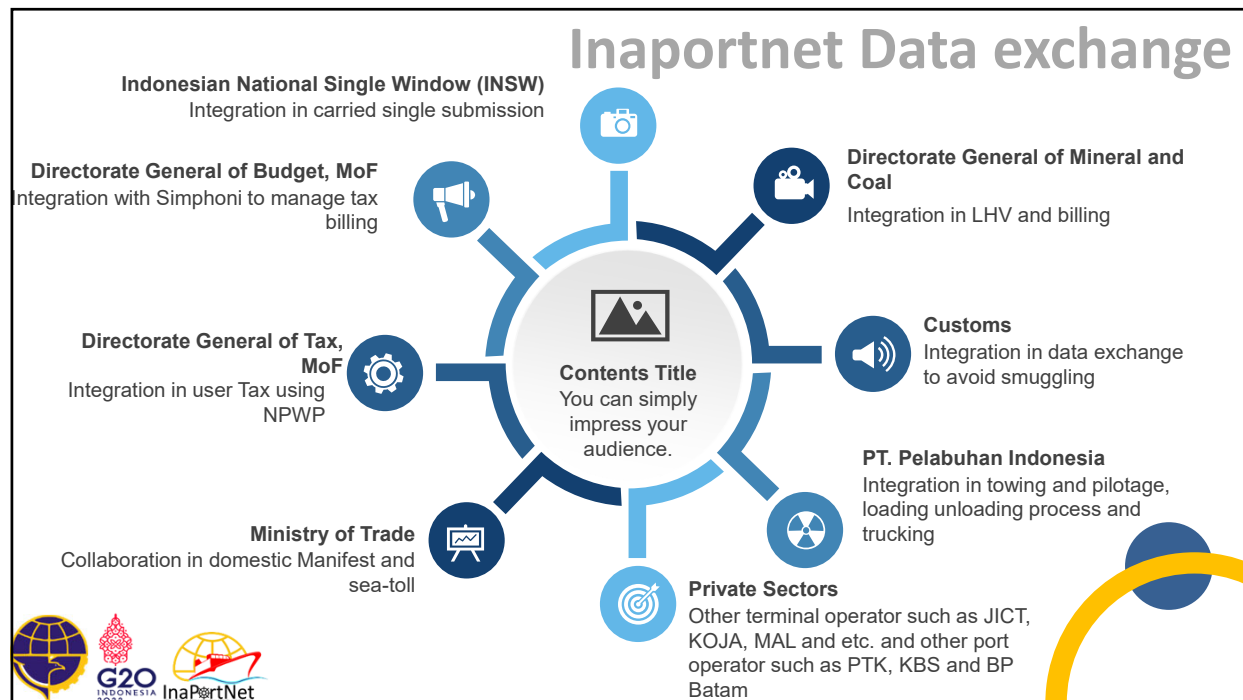
Shipping agent is required to submit all information regarding ship arrival/departure to INSW system ONE TIME ONLY

**Integration and collaboration among government agencies**

**Time and process efficiency**







## Summary

To focus on improving the service system in port area, Indonesia issued a legal basis to collaborate logistic sector in port to simplify the business process and reduce logistics cost

Indonesia has implemented Inaportnet in 77 ports, collaborating with other government agencies in ports

Inaportnet provides open Application Programing Interface (API) for Vessel, routes, crew, sailing declaration and shipping agent data.

Ministry of Transportation welcomes data exchange using XML or JSON and also any further discussion



THANK YOU

